



REGIONAL SPECIALISED METEOROLOGICAL CENTRE -TROPICAL CYCLONES, NEW DELHI TROPICAL WEATHER OUTLOOK

DEMS-RSMC TROPICAL CYCLONES NEW DELHI DATED 18.06.2025

TROPICAL WEATHER OUTLOOK FOR THE NORTH INDIAN OCEAN (THE BAY OF BENGAL AND THE ARABIAN SEA) VALID FOR THE NEXT 168 HOURS ISSUED AT 0600 UTC OF 18.06.2025 BASED ON 0300 UTC OF 18.06.2025.

LAND:

Yesterday's **low pressure area** over Southwest Bangladesh and adjoining Gangetic West Bengal moved west-northwestwards, lay over Gangetic West Bengal & neighbourhood as a **well marked low pressure area** at 0000 UTC and persisted over the same region at 0300 UTC of today, the 18th June 2025. The associated upper air cyclonic circulation extended upto 7.6 km above mean sea level tilting southwards with height. It is likely to move slowly northwestwards across Jharkhand during next 24 hours.

BAY OF BENGAL:

Scattered to broken low and medium clouds with embedded intense to very intense convection lay over north adjoining central & southeast Bay of Bengal and north Andaman Sea. Scattered low and medium clouds with embedded moderate to intense convection lay over rest Bay of Bengal and south Andaman Sea.

*PROBABILITY OF CYCLOGENESIS (FORMATION OF DEPRESSION) DURING NEXT 168 HRS:

24 HOURS	24-48 HOURS	48-72 HOURS	72-96 HOURS	96-120 HOURS	120-144 HOURS	144-168 HOURS
NIL	NIL	NIL	NIL	NIL	NIL	NIL

*NOTE: EVERY 24HR FORECAST IS VALID UPTO 0300 UTC (0830 IST) OF NEXT DAY

LAND:

Yesterday's low-pressure area over north Gujarat region & neighbourhood moved nearly northwards, lay over central Rajashtan & neighbourhood at 0300 UTC of today, the 18th June 2025. The associated upper air cyclonic circulation extended upto 5.8 km above mean sea level tilting southwards with height.

ARABIAN SEA:

Scattered to broken low and medium clouds with embedded intense to very intense convection lay over northeast Arabian Sea off Gujarat coasts adjoining eastcentral Arabian Sea. Scattered low and medium clouds with embedded moderate to intense convection lay over Gulf of Kutch, Gulf of Cambay and southeast Arabian Sea, Lakshadweep Islands, Maldives & Comorin area.

*PROBABILITY OF CYCLOGENESIS (FORMATION OF DEPRESSION) DURING NEXT 168 HRS:

24 HOURS	24-48 HOURS	48-72 HOURS	72-96 HOURS	96-120 HOURS	120-144 HOURS	144-168 HOURS
NIL	NIL	NIL	NIL	NIL	NIL	NIL

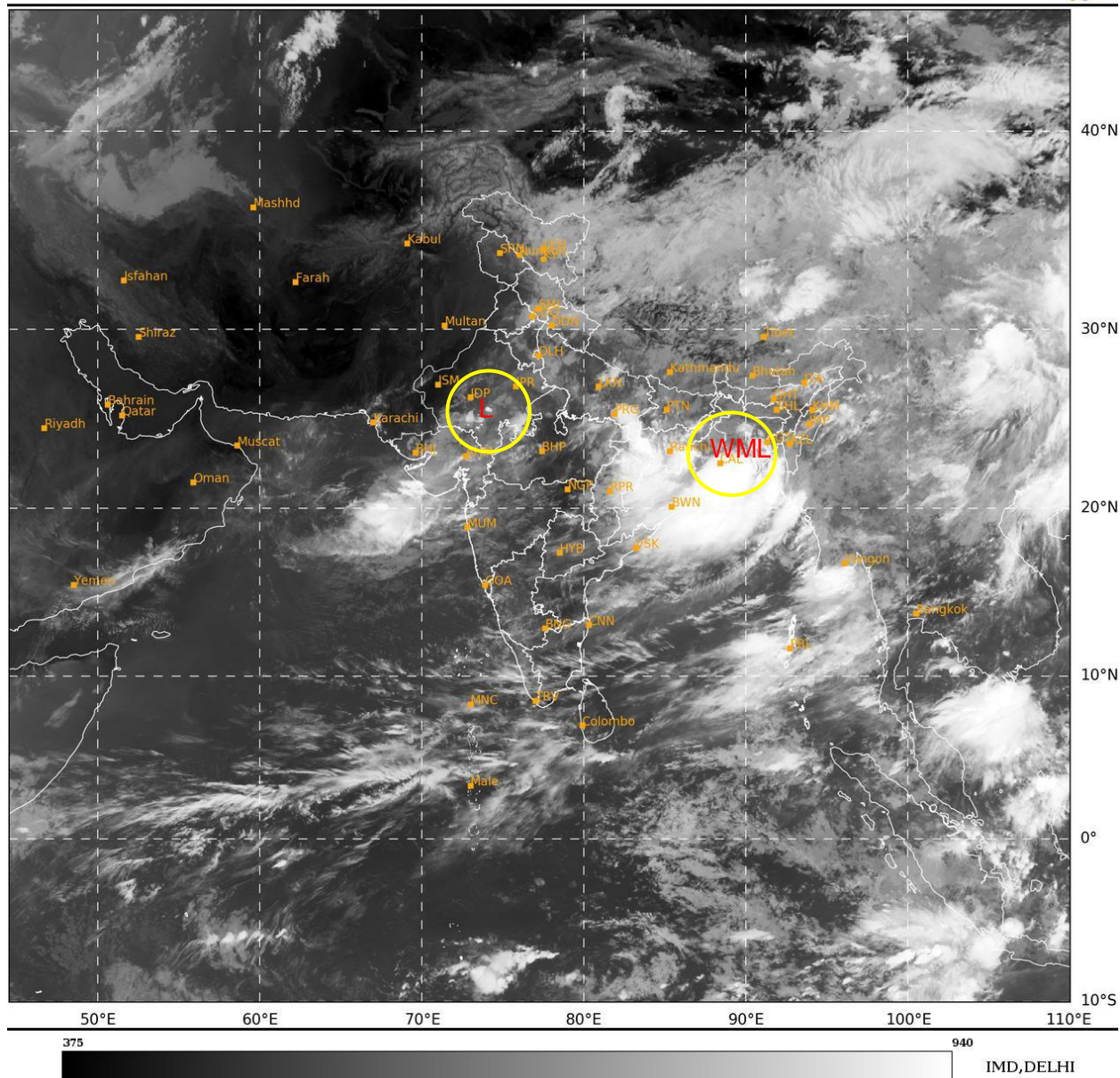
*NOTE: EVERY 24HR FORECAST IS VALID UPTO 0300 UTC (0830 IST) OF NEXT DAY

Cloud distribution: (a) Isolated: <25%, Scattered:25-50%, Broken: 51-75%, Solid:>75%, Convection Intensity: (a) Weak: Cloud Top Temperature(CTT)>-25°C,(b)Moderate:CTT:-25°Cto-40°C,(c)Intense:CTT: -41°Cto -70°Cand(d)Very Intense::Less than -70°C
PROBABILITYOFCYCLOGENESIS(FORMATIONOFDEPRESSION):NIL:0%,LOW:1-33%,MODERATE:34-66%ANDHIGH:67-100%
ThisisaguidanceBulletinforWMO/ESCAPPanelMembercountries.VisitrespectiveNationalwebsitesforCountryspecificBulletins

REMARKS: NIL

SAT : INSAT-3DR IMG
IMG_TIR1 10.8 um
LIC Mercator

18-06-2025/(0315 to 0342) GMT
18-06-2025/(0845 to 0912) IST



WML: WELL MARKED LOW PRESSURE AREA
L: LOW PRESSURE AREA

Cloud distribution: (a) Isolated: <25%, Scattered:25-50%, Broken: 51-75%, Solid:>75%, Convection Intensity: (a) Weak: Cloud Top Temperature(CTT)>-25°C,(b)Moderate:CTT:-25°Cto-40°C,(c)Intense:CTT: -41°Cto -70°Cand(d)Very Intense::Less than -70°C
PROBABILITYOFCYCLOGENESIS(FORMATIONOFDEPRESSION):NIL:0%,LOW:1-33%,MODERATE:34-66%ANDHIGH:67-100%
ThisisaguidanceBulletinforWMO/ESCAPPanelMembercountries.VisitrespectiveNationalwebsitesforCountryspecificBulletins